



# Leading Manufacturer & Exporters of Quality Municipal Castings

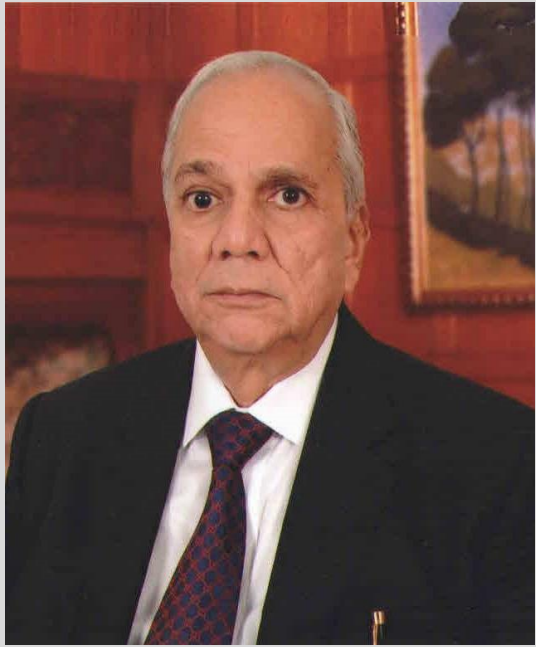
A Renowned Name in Manhole Covers, Gully Gratings & Channel Grating



**MAKING THE WORLD BEAUTIFUL**

**WITH INNOVATIVE MUNICIPAL CASTING SOLUTIONS**





**Mr. B. D. Agarwal**  
Managing Director

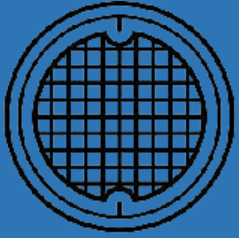
- Our journey began twenty years ago and today **Calcutta Export Company** stands as one of the most promising names in the Cast Iron(Grey Iron) and Ductile Iron castings sector in India. We take utmost pride in having established our presence in the global market across fifteen countries. It can be rightly asserted that we are just like the steel structures we manufacture – simple in our outlook and tough from inside. Our biggest achievement lies in being able to meet, in fact exceed the expectations of our clients through our manufacturing and exporting solutions that speak of sustainability.
- The real strength of Calcutta Export Company is its people. Our work process is continuously refined under the surveillance of experienced professionals. We are proud to have some of the best minds under whose guidance the company has been able to mark its unique position by contributing towards the creation of an environment friendly world we live in.
- We follow a code of conduct for everyone associated with the company – employees, clients, partners and other stakeholders for them to be treated with respect and dignity. Together we strive to foster a culture that speaks of trust and quality.

*Best Regards*  
*B. D. Agarwal*

**MESSAGES FROM MD**



# ABOUT CALCUTTA EXPORT COMPANY



- One of the largest manufacturers and exporters of Grey and Ductile Iron Castings from India
- Municipal, Sanitary and Industrial Casting for Public Works Construction
- Heavy Casting like Manhole Covers, Frames, Grates.
- Multiple certifications including ISO 9001 2015

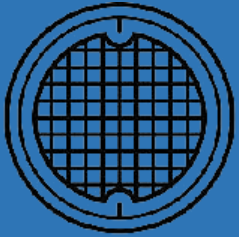
- CEC has an annual production capacity of 30,000 / 42,000 M.T.
- Two PLC Controlled Auto Sand plant with 25MT per hour sand supply capacity
- Three pairs of simultaneous jolts squeeze moulding machines
- Equipped with all Physical, Mechanical, and Chemical Testing Facilities
- Quality Control from Raw Material Incoming to Shipment of Finished Goods
- 5 cupolas furnaces
- Two 4 axis VMC machine for In-house Pattern Making System & CO<sub>2</sub> Core making system
- 500 Kg batch capacity shot blasting.



INTRODUCTION

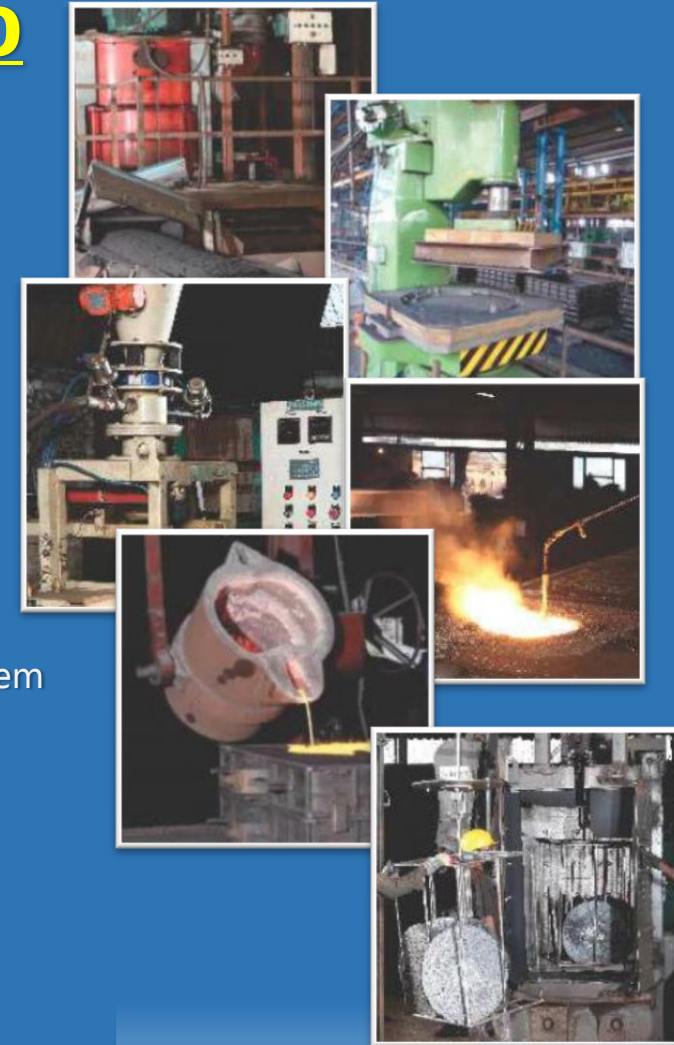


# ABOUT **HOWRAH FERROUS LIMITED**



- Manufacturer & Exporter of Ductile Iron Castings
- Municipal, Sanitary and Industrial Casting for Public Works Construction
- Heavy Casting like Manhole Covers, Frames, Grates.
- Multiple certifications including ISO 9001 2008, ISO 9001 2015, ISO 14001 2015, ISO 45001 2018 and BSI Kitemark.

- Installed Capacity 12000MT/Years
- Two PLC Controlled Auto Sand plant with 25MT per hour sand supply capacity
- SMFA 900 Moulding Machine (Jolt Squeeze), Sarvaflex 900 High Pressure Machine
- ARPA-450 Moulding Machine (Jolt Squeeze), ARPA-450 Moulding Machine MHS System
- Equipped with all Physical, Mechanical, and Chemical Testing Facilities
- Quality Control from Raw Material Incoming to Shipment of Finished Goods
- 3 Nos. 1000Kg Induction Furnace Crucible with 750 kW power pack,
- 1 Nos. 1000Kg Crucible with 1000 kW power pack
- 4 axis VMC machine for In-house Pattern Making System & CO<sub>2</sub> Core making system
- 500 Kg batch capacity shot blasting.



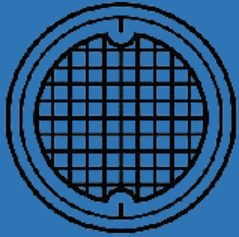
## INTRODUCTION



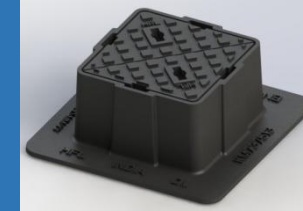
HOWRAH FERROUS LTD



# INTRODUCTION OF SONAR CASTING LIMITED



- Manufacturer & Exporter of Cast (Grey) Ductile Iron Castings
- Municipal, Sanitary and Industrial Casting for Public Works Construction
- Heavy Casting like Manhole Covers, Frames, Grates.



- Installed Capacity 2000MT/Months
- World class Infrastructure
- DISA Flex 90 Moulding line with the box sizes 1000mm x 1000mm / 250mm x 250mm
- Vertical Moulding line with cake sizes of 1100mm x 1200mm x thickness varies from 200mm to 480mm
- Quality and Experienced Engineers with over 20 Years of Experience
- Equipped with all Physical, Mechanical, and Chemical Testing Facilities
- One no 4 axis VMC machine for In-house pattern making system.
- Quality Control from Raw Material Incoming to Shipment of Finished Goods

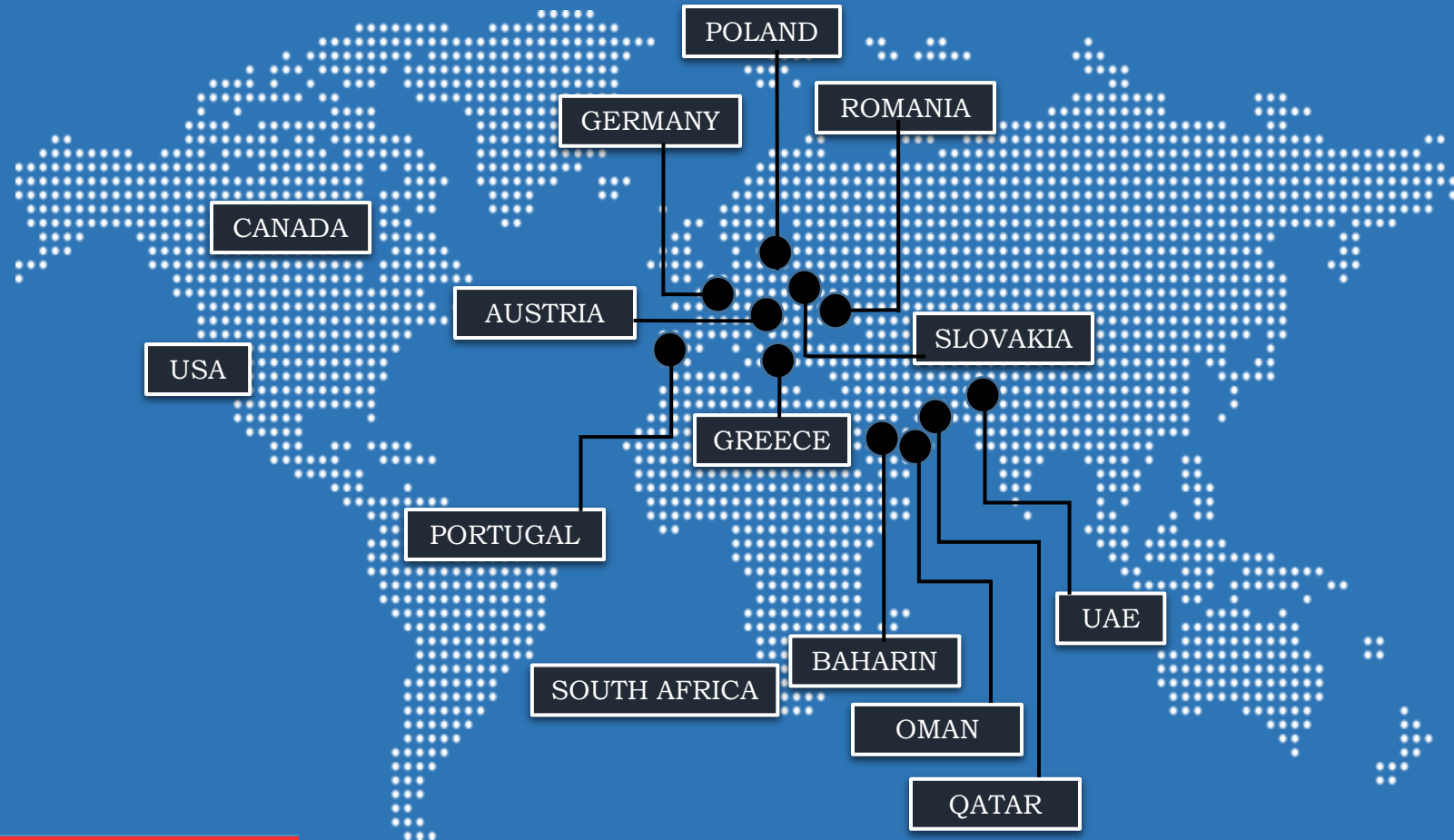


**INTRODUCTION**



**SONAR**  
CASTING

## Our exporting Quality Iron Casting of International Standard



**GLOBAL PRESENCE**



**SONAR**  
CASTING



## MISSION STATEMENT

To become an inspiring world class business house with global presence  
Cutting edge innovation and distinguished quality standards.

## OUR VISSION

In this ever evolving world we strive to achieve our vision by exploring untapped markets, diversifying into new areas, satisfying our customer's expectations to the fullest and through continuous improvement.

## CORE VALUES



## OUR VALUES



The values for which we as a family stands for:

- Foster a culture built on mutual trust and respect.
- Continues enhancement of our team through training.
- High commitment with passion towards our goals.
- Valuing ethics and integrity with full conviction.
- Growing with the community and partnering for mutual prosperity and development.

**CORE VALUES**







## QUALITY ASSURANCE

- A laid down Quality Assurance Plan has been established for controlling Quality at Every Stages of Manufacturing.
- Quality and Trained Personnel Available in every department of Manufacturing to ensure strict Quality Control and Compliance Requirement of products manufactured.
- Every product manufactured in the Factory has strict Traceability for all manufacturing records linked to it.
- In-house Design and Development of products.

**QUALITY ASSURANCE**



### Our Product are Quality Tested from Raw Material to Delivery Stages:

- Spectrometer for Chemical Analysis of Molten Metal
- Microscope with Image Analyzer for determining microstructure
- Tensile, Elongation and Hardness
- Load Test
- Shot Blasting of Products to Detect Surface Defects
- Dimensional Inspection for each batch
- DFT Test for Painting

Each batch of Finished Products stands as a testimony of its uncompromised quality standards.

**TESTING FACILITES**

**INCOMING RAW MATERIAL**



**PRODUCTION**



**INSPECTION &  
QUALITY CONTROL**



**DESPATCH**

**MANUFACTURING PROCESS**



**SONAR**  
CASTING





**DISA FLEX 90**



### **MOULDING SYSTEM**

- DISA Flex 90 Moulding line with box size 1000mm x 1000mm /250mm x 250mm

**PRODUCTION FACILITEIS**



**SONAR**  
CASTING



**VERTICAL  
MOULDING  
MACHINE**



**MOLDING SYSTEM**

- Vertical Moulding line with cake size of 1100mm x 1200mm thickness varies from 200mm to 480mm.

**PRODUCTION FACILITEIS**



**CORE  
SHOOTER  
MACHINE**

**CORE  
SHOOTER  
MACHINE**



**PRODUCTION FACILITEIS**





**DISA TM-90  
SAND MIXER**



**PRODUCTION FACILITEIS**



**PRODUCTION FACILITEIS**

**MELTING SYSTEM**

- Two Tons Medium Frequency Induction furnace with 3 nos 2000 Kg Crucible with 1500 kW powerpack.

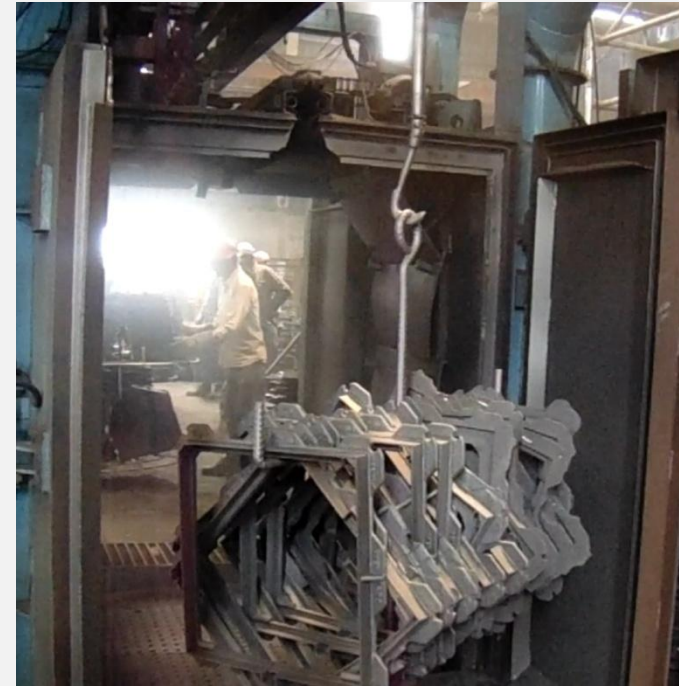






### **METAL POURING**

- Metal Pouring through 5 ton Mechanical Hoist.
- Hand Pouring facility also available.



### **SHOT BLASTING**

- 500 Kg batch capacity shot blasting machine for surface cleaning of the casting, fitted with dust collector.

**PRODUCTION FACILITEIS**



**SONAR**  
CASTING





**SPECTROMETER**  
For determine chemical analysis of molten metal

**MICROSCOPE**  
With image analyzer for determining microstructure



**QUALITY CONTROL**



**SAND TESTING**

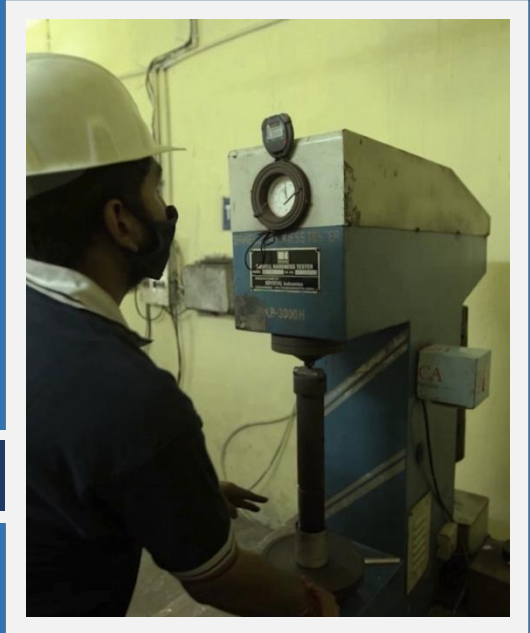


**CHEMICAL TESTING**



**MECHANICAL TESTING OF TEST BAR**

**HARDNESS TESTING**



**QUALITY CONTROL**



## LOAD TESTING MACHINE

**COMPUTERISED LOAD TESTING MACHINE** with testing facility up to 120 Ton/ 1200kN



**QUALITY CONTROL**



**SONAR**  
CASTING



# PRODUCTS

- D.I. Rectangular / Circular Manhole Cover & Frame with/without Locking System
- D.I. Rectangular / Circular Manhole Cover & Hinged type Frame with/without Locking System
- Recessed Type Manhole Frame & Cover
- D.I. Gully Grating
- D.I. Channel Grating
- D.I. Double Triangular / Multi-Triangular Cover with Frame.
- Surface Box
- Solid Top Manhole Cover & Frame



COATING BLACK BITUMINOUS

MATERIAL BS-EN-1563 500/7

SPECIFICATION BS-EN-124-2-2015



A-15



B-125



C-250



D-400



E-600



F-900

## Options :

- Available in Single/Double Seal
- Customize Badging Available

**DETAILS AVAILABLE ON REQUEST**

**OUR PRODUCTS**



**SONAR**  
CASTING

**FOR ANY ENQUIRY**



**Name: Mr. Rahul Paul**

**Contact No/WhatsApp: +91 9830059615**

**Email: [rahul\\_hfl@yahoo.co.in](mailto:rahul_hfl@yahoo.co.in)**

**[rahul@howrahferrous.com](mailto:rahul@howrahferrous.com)**

**[admin@howrahferrous.com](mailto:admin@howrahferrous.com)**

**[admin@calcuttaexport.com](mailto:admin@calcuttaexport.com)**

**CONTACT US**



# CONTACT US



CONTACT US

## Head Office:

### SONAR CASTING LIMITED

(AN ISO 9001:2015 CERTIFIED COMPANY)

76 Eldeco Greens, Gomti Nagar, Lucknow  
Uttar Pradesh – 226010, India



### CALCUTTA EXPORT COMPANY

(AN ISO 9001:2015 CERTIFIED COMPANY)

18 R.N. Mukherjee Road, 4th Floor,  
Kolkata - 700 001, West Bengal, India.

Tel : +91 33 2248 7249

Fax : +91 332248 1879

E-mail : [commercial@calcuttaexport.com](mailto:commercial@calcuttaexport.com)

## Manufacturing Unit:

### SONAR CASTING LIMITED

(AN ISO 9001:2015 CERTIFIED COMPANY)

Sky City Sujalam Park, Andal, Paschim  
Bardhaman, Durgapur – 713321, India

Email: [ceo@sonarcasting.com](mailto:ceo@sonarcasting.com)



### CALCUTTA EXPORT COMPANY

Rabindra Sarani, Bhattanagar,  
Howrah, West Bengal, India

Tel : +91 33 26454569

Fax: +91 33 26454542

Email: [admin@calcuttaexport.com](mailto:admin@calcuttaexport.com)

### HOWRAH FERROUS LIMITED

AN ISO 9001:2015 | 14001:2015 | 45001:2018

CERTIFIED COMPANY, Kitemark No. KM737513

Jalan Industrial Complex, Gate No. 3,

Baniara, Jangalpur, Domjur, Begri,

Howrah – 711411, West Bengal, India

Email: [rahul\\_hfl@yahoo.co.in](mailto:rahul_hfl@yahoo.co.in)/[rahul@howrahferrous.com](mailto:rahul@howrahferrous.com)







# THANK YOU

